



## FLOW EZY FILTERS "NEWS YOU CAN USE"—MAY 2007

P.O. Box 1749, Ann Arbor, MI, USA 48106

phone (734) 665-8777 or (800) 237-1165 / fax (734) 665-4332 or (800) 252-1730

web site: [www.flowezyfilters.com](http://www.flowezyfilters.com) corporate e-mail: [flowezy@flowezyfilters.com](mailto:flowezy@flowezyfilters.com)



### THE "BEAR TRAP" MAGNETIC PAD

These reusable oil filter magnets for spin-on filter elements are designed to pick up ferrous and metallic particles that may not get trapped by the filter. They simply stick to the can with powerful rare earth magnets. This gives longer life to the filter and the pads can be reused with each filter can. They are available in 2 sizes to fit all sized cans.



### REPLACEMENT BASKETS FOR BAG FILTER HOUSINGS

Do you ever have a requirement for a replacement basket for a bag filter or basket strainer housing? Flow Ezy has been manufacturing these for years. It doesn't matter who the manufacturer of the housing is we can most likely make it. Any size, any configuration. All we need is a detailed sketch, housing model number, basket size, and basket type. For more information, call Flow Ezy Filters.



### NEED A HIGH PRESSURE IN-LINE FILTER?

Try our 6IL or 15IL in-line filters rated for working pressures up to 3,000 psi and flow rates to 15 gpm with housings made of steel or stainless steel. Available from stock is a wide range of filtration sizes from 3 micron microglass to 595 micron stainless steel. Pipe sizes in stock are from 3/8" to 1" npt. 7/8-14 and 1 5/16-12 SAE straight thread housings are available, as well.



As an added note, if you only need a housing rated to 1,500 psi working pressure, try our anodized aluminum housing in the same sizes.

### THOUGHTS TO PONDER

When the choice is to be right or to be kind, always make the choice that brings peace.

- Dr. Wayne Dyer

The ideas I stand for are not mine. I borrowed them from Socrates. I swiped them from Chesterfield. I stole them from Jesus. I put them in a book. If you don't like their rules, whose would you use?

- Dale Carnegie



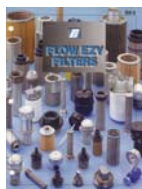
### SUCTION SCREENS

Suction screens can be used for straining oil, chemicals, paint, or water. They will not rust.

They are made of a glass reinforced nylon connector end and stainless steel wire cloth which is sonically embedded into the nylon. No epoxy is used. 1/8" to 3" female npt and 3/8" to 3" male npt pipe sizes are available. Mesh size range is as coarse as 4 to as fine as 200 mesh. All stainless steel units are available in selected pipe sizes and mesh sizes, as well.

### FLOW EZY "ALMOST" FULL LINE CATALOG BB-8

If you don't have our catalog be sure to request your copy. Check out our web site to see what other Flow Ezy catalogs you may need.



### EMPLOYEE PROFILE



Meet Christina Wilson, an 11 year employee. Chris came to Flow Ezy from National City Bank. She wears many hats and is a vital part of inside sales, order entry, accounts receivable, proofreading, and administrative assistant. Chris has been married to Vince for 16 years and has two children, Tony, 14, and Samantha, 13. Chris and Vince have two dogs, Snuggles and Gizmo, both Shihtzus.

### FLUID HANDLING EQUIPMENT

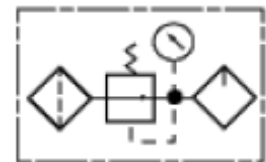
Anytime fluid needs handling, whether it is being transferred, conditioned, introduced, or recycled, it needs to be filtered. It takes smart technology to make fluid handling a simple task. Particle contamination AND water can destroy a system quickly. Keep systems running efficiently by using our filter cart. Contamination AND water will be kept in check.



Quality-Portable-Convenient-Economical

### THREE APPROACHES TO MAINTENANCE

1. REACTIVE. Crisis management philosophy that consists of emergency breakdown maintenance.
2. PREVENTIVE. Philosophy of change it whether you need to or not in hopes of precluding a failure.
3. PROACTIVE. Uses a combination of careful design, fluid analysis, and condition monitoring to track system health. This allows maintenance planners to get maximum useful life from a component.



- from *Bird Bones & Sludge* by Vickers

WHICH APPROACH DO YOU TAKE?