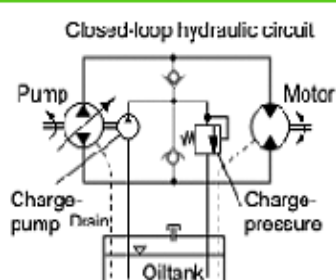
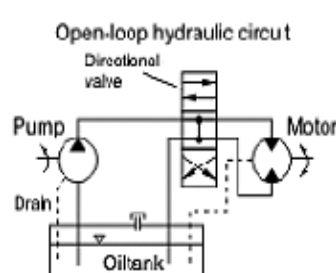




Filters
Strainers &
Breathers
Racing
Filters
Accessories

HYDRAULIC SYSTEM DESIGN



What is an open hydraulic system? What is a closed one? Do you know when to recommend either one? Fluid power systems are manufactured for a wide range of applications. Many different components are designed to provide functions that will control the system operation. Different manufacturers use varying approaches to system design. To the inexperienced and untrained, this may be an obstacle to the understanding and principles of the operation. Make sure when designing a system, it will do everything you want it to do. Also, in order for this to occur, proper filtration must be designed into it, as well. Talk to a filtration specialist if you would like to know where proper filtration should be placed in your system.

SUMP STRAINERS

One thing to remember is that you must protect the pump. The pump is the heart of any fluid power system. If the pumps breaks down, the system will break down. Putting a strainer between the reservoir and the pump will help protect the pump. The level of filtration in this area cannot be too restrictive or pump cavitation may occur. If this occurs you may have a whole new set of problems. Consult a filtration specialist if you are unclear about how to properly protect the pump.



[Please Click Here To See More On Sump Strainers](#)

CUSTOM FILTER MANUFACTURING CAPABILITIES



Do you realize the capabilities Flow Ezy has? In addition to our standard product line, we have the capabilities to make most configurations and types of filters. Above you see an assortment of what we have done in past years. If you have an application that requires a custom filter, give us a try. We most likely will be able to help. If you need 1, 100, 250, or more, Flow Ezy should be your first contact.

OIL ABSORBING INSERT CARTRIDGES

Is water your system fluid? Could your water be contaminated with oil? Would you like a simple, inexpensive way to improve the quality of the water in your system? Is the answer to each question above a resounding, "Yes!" Then you should try Flow Ezy's new Oil Absorbing Insert Cartridge, for bag filter systems. Insert the cartridge into the filter bag. The bag will do the filtering, the cartridge will absorb any trace oil. They are made of a thick, loft, large fiber, polypropylene meltblown media with a polypropylene core. They repel water while absorbing up to 25 times their own weight in oil and other petroleum base fluids.



PRODUCT APPLICATION Oil Absorbing Insert Cartridge



With regards to the Oil Absorbing Insert Cartridge, one example is where they are used in conjunction with a bag filter system. As we all know, there are a lot of rides in amusement parks where water is the force that moves the conveyance. A lot of water is pushed through the various rides with hydraulic equipment. It is inevitable that along the way some trace hydraulic oil will leak into the system. For safety and health reasons it is important to keep the hydraulic oil from coming into contact with people. That is where the O.A.I.C. placed inside the bag filter housing helps to reduce this from occurring.

[Flow Ezy makes every effort to maintain our email list, if you wish not to receive our newsletter please click here to let us know.](#)