

FJV-3N Series High Pressure T-Type Filter Assemblies

Features

- High collapse 4500 psid (310 bard) filter element using SWIFFFELT™ 316 stainless steel medium
- Flows to 15 gpm (56 lpm)
- Port sizes: 1/2" SAE (J1926-1 STR THREAD)
(Other line sizes available, consult factory)

Notes and Specifications

Maximum working pressure:

5,000 psi (344 bar)

Proof pressure:

6,000 psi (413 bar)

Burst pressure:

Consult factory

Temperature rating:

-100° (-73°C) to 500° (260°C)

Materials of Construction:

Head and Body: 304 Stainless Steel standard (316, 17-4PH, Hastelloy® and others available)

Seal material: Fluorocarbon (Viton®) (Teflon® and Kalrez® and other compounds also available)

Filter element collapse pressure: 4500 psid (310 bard)

Element construction: SWIFFMESH™ all 316 stainless steel (no resin binders) medium, 304 stainless steel end caps



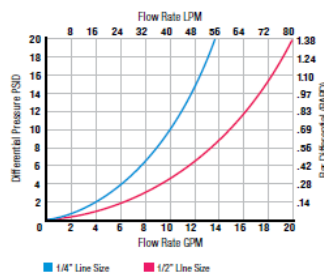
Pressure Drop Information

Housing Pressure Drop

Fluid at 15cSt(77.5 SUS), 0.8572 S.G.

Housing pressure drop is directly proportional to specific gravity.

FJV-3N Series Housing

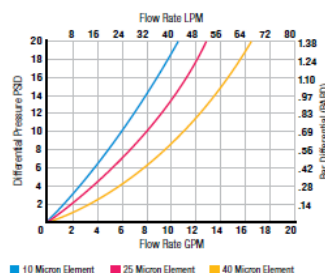


Element Pressure Drop

Fluid at 15cSt(77.5 SUS), 0.8572 S.G.

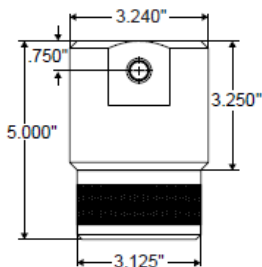
Correct for other fluids by multiplying new viscosity in cSt/5 (SUS/77.5) x new S.G./0.8572

FJE-3N Series Element

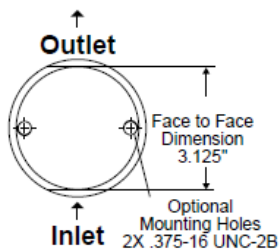


Dimensional Drawings

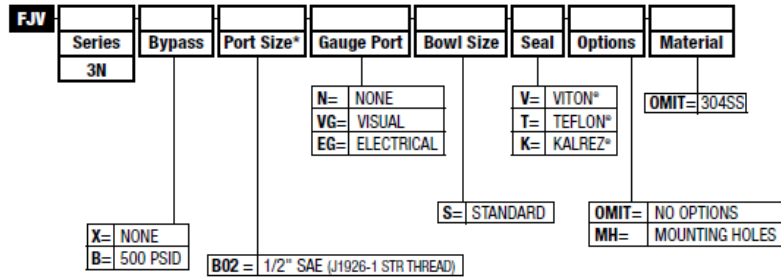
Front View



Top View



Ordering Information for Standard High Pressure T-Type Filter Assemblies



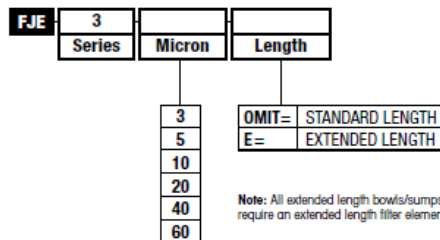
Example:

FJV-3N-B-B02-N-S-V

This would be the part number for a standard Series 3N T-type Filter Assembly with a 304 stainless steel housing with a 500 PSID bypass, a 1/2" SAE port, no gauge port, standard bowl and Viton® seal.

* Other port sizes and material available, consult factory.
Viton, Teflon and Kalrez are registered trademarks of E.I. du Pont de Nemours and Company or its affiliates.
Hastelloy is a registered trademark of Haynes International, Inc.

Ordering Information for High Pressure Filter Elements



Example:

FJE-3-10

This would be the part number for a Metal Felt Filter Element made with 316L stainless steel filament with 10 micron media to fit a Series 3 T-type Housing with a standard length bowl.