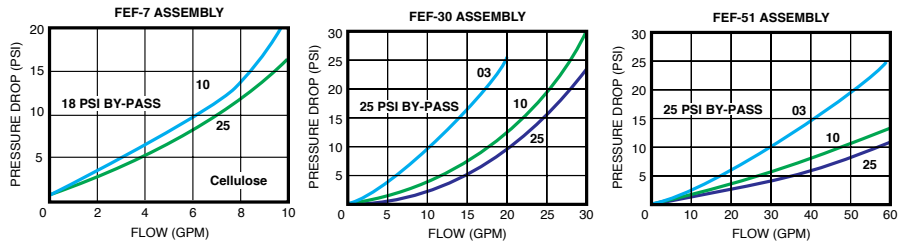


SPIN-ON FILTERS

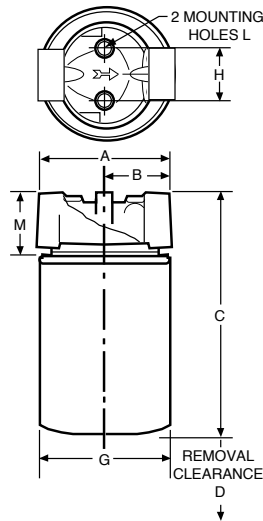
- FLOWS TO 60 GPM
- PRESSURES TO 150 psi
- STANDARD CAN THREADS
- DIE-CAST ALUMINUM HEADS

These are industry-standard filters; the replacement elements will fit the heads of other major manufacturers (and vice versa). The smaller model FEF-30 cans will interchange with those of U.S. manufacturers, and the larger Model FEF-51 cans will interchange with those of U.S. and some European suppliers.



Typical pressure drop through clean filter assembly with oil viscosity of 150 SUS

	FILTER MODEL		
	FEF-7	FEF-30	FEF-51
A	3.05	3.75	5.15
B	1.29	2.87	2.58
C	4.5	7.28	9.56
D	.5	.63	1.5
G	3.05	3.86	5.04
H	1.50	1.50	1.87
L	1/4-20	1/4-20	5/16-18
M	1.12	1.52	2.40
Weight	13 oz	1.75 lb	4.0 lb



MODEL FEF-51
Element area 950 sq. in.
Flows up to 60 GPM (return)

MODEL FEF-7
Element area 117 sq. in.
Flows up to 7 GPM (return)



MODEL FEF-30
Element area 510 sq. in.
Flows up to 25 GPM (return)

HOW TO ORDER COMPLETE FILTERS

Select the desired specifications from the ordering table and build an ordering code number, as shown in this sample:

FEF - 30 - 12 - 10 - RV25
STYLE - SIZE - PORT - ELEMENT - VALVE

STYLE	SIZE	PORTS	ELEMENT	BYPASS VALVE
FEF	7	04 (1/4 NPT)	03 (3 micron)* 10 (10 micron) 25 (25 micron)	RV-25 (25 PSI) size 30-51
		06 (3/8 NPT)		RV-18 (18 PSI) size 7*
	30	12 (3/4 NPT) 12S (1-1/16-12 SAE)		0 no RV
51	51	20 (1-1/4 NPT)		
		24 (1-1/2 NPT)		
		20S (1-5/8-12 SAE)		

*Not available on FEF-7, bypass for FEF-7 is located inside element.

HOW TO ORDER REPLACEMENT ELEMENTS

Select the desired specifications from the ordering table and build an ordering code number, as shown in this sample:

FEE - 30 - 10
STYLE - SIZE - ELEMENT

STYLE	SIZE	ELEMENT	ELEMENT THREAD
FEE	7	*03 (3 micron)	(7) 3/4-16 UNF
	30	10 (10 micron)	(30) 1-12 UNF
	51	25 (25 micron) **100 (100 mesh)	(51) 1-1/2-16 UNF

*Not available on FEE 7. **Available in FEE 30, 51 only

HOW TO ORDER SPIN-ON HEADS

Select the desired specifications from the ordering table and build an ordering code number, as shown in this sample:

FEH - 30 - 12 - RV25
STYLE - SIZE - PORT - VALVE

STYLE	SIZE	PORTS	BYPASS VALVE
FEH	7	04 (1/4 NPT)	RV-25 (25 PSI) size 30-51
		06 (3/8 NPT)	
	30	12 (3/4 NPT) 16 (1-1/16-12 SAE)	RV-18 (18 PSI) size 7*
51	51	20 (1-1/4 NPT)	0 no RV
		24 (1-1/2 NPT)	
		20S (1-5/8-12 SAE)	

*Bypass for FEH-7 is located inside element.